



18 St Ann Place, Salisbury, Wiltshire, SP1 2SU

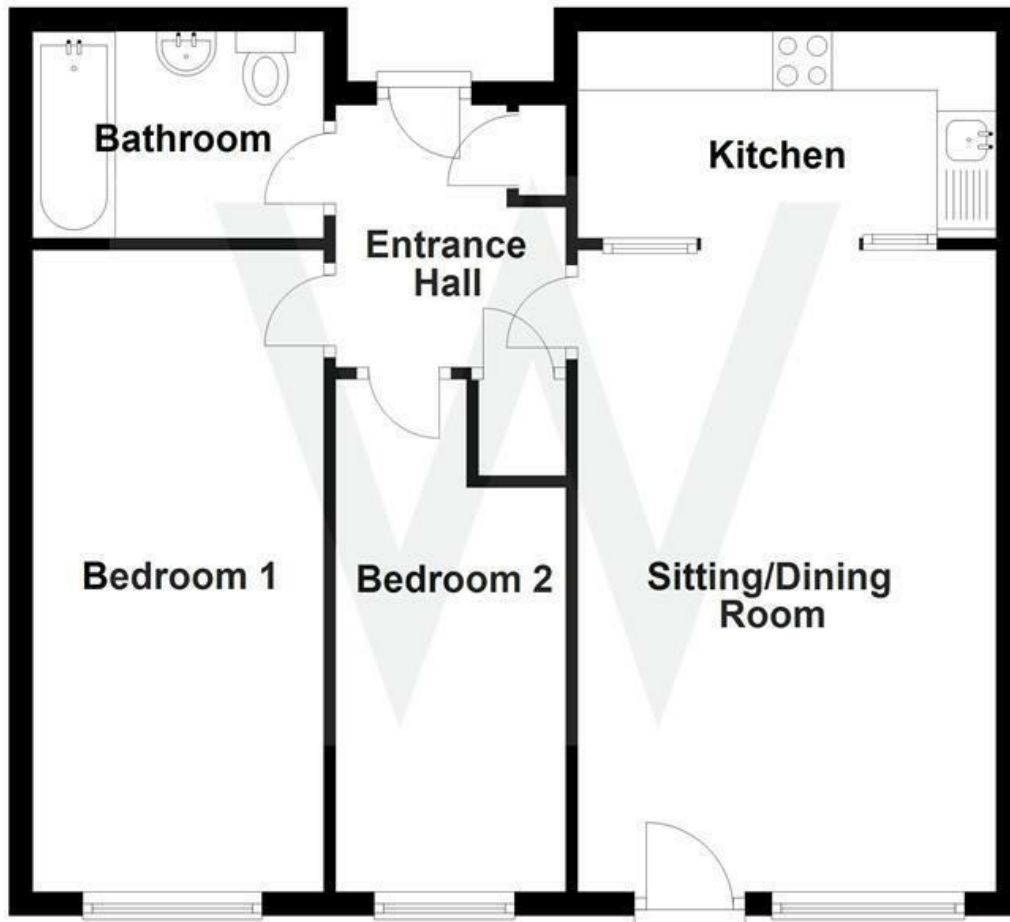
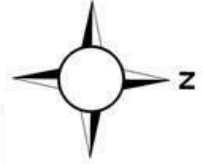
A GROUND FLOOR TWO BEDROOM RETIREMENT FLAT for the active over 55's conveniently located with level access to the city centre.

- OVER 55's ONLY
- NO PETS
- GROUND FLOOR APARTMENT FOR THE ACTIVE RETIRED
- TWO BEDROOMS, LOUNGE, KITCHEN, BATHROOM
- RESIDENTS' LAUNDRY ROOM
- RESIDENTS' LOUNGE
- RESIDENT HOUSE MANAGEMENT
- EPC BAND C
- COUNCIL TAX BAND D

£750 PCM

Ground Floor

Approx. 58.1 sq. metres (625.4 sq. feet)



Total area: approx. 58.1 sq. metres (625.4 sq. feet)

WHITES

Castle Chambers, 47 Castle Street, Salisbury,
Wiltshire, SP1 3SP

Tel: 01722 336422/Option 2

www.hwwhite.co.uk

email: lettings-management@hwwhites.co.uk

| Energy Efficiency Rating | | Current | Potential |
|---|-------------------------|---------|-----------|
| Very energy efficient - lower running costs | | | |
| (92 plus) A | | | |
| (81-91) B | | | |
| (69-80) C | | | |
| (55-68) D | | | |
| (39-54) E | | | |
| (21-38) F | | | |
| (1-20) G | | | |
| Not energy efficient - higher running costs | | | |
| England & Wales | | 77 | 80 |
| | EU Directive 2002/91/EC | | |

| Environmental Impact (CO ₂) Rating | | Current | Potential |
|---|-------------------------|---------|-----------|
| Very environmentally friendly - lower CO ₂ emissions | | | |
| (92 plus) A | | | |
| (81-91) B | | | |
| (69-80) C | | | |
| (55-68) D | | | |
| (39-54) E | | | |
| (21-38) F | | | |
| (1-20) G | | | |
| Not environmentally friendly - higher CO ₂ emissions | | | |
| England & Wales | | | |
| | EU Directive 2002/91/EC | | |